

# Scanning for Volumetric or Quantity Surveys

Scanning is a powerful tool for volumetric surveys. With stop and go options large areas can be quickly captured to a great deal of accuracy.

Toxic sites can be quantified as the capture does not require contact. This lends scanning to many applications where conventional pickup would be a safety hazard.

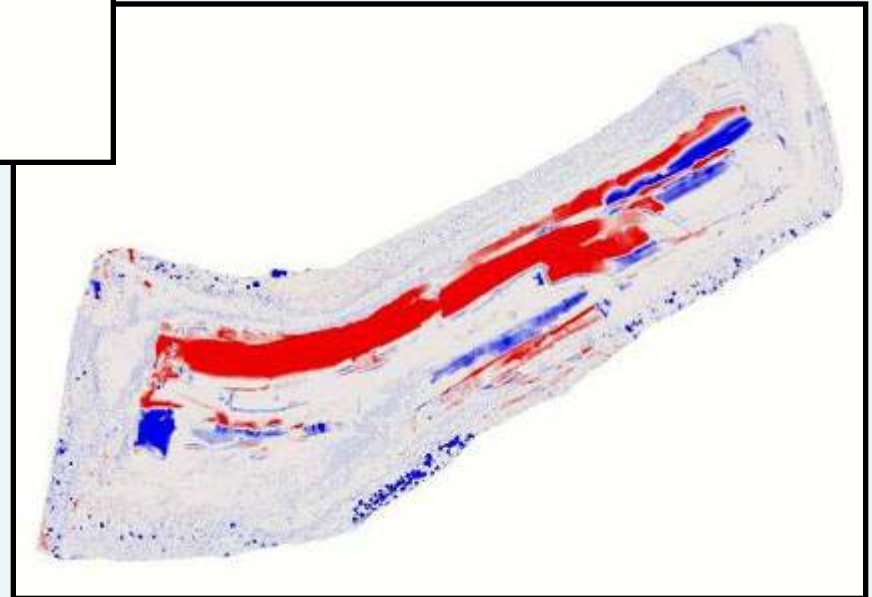
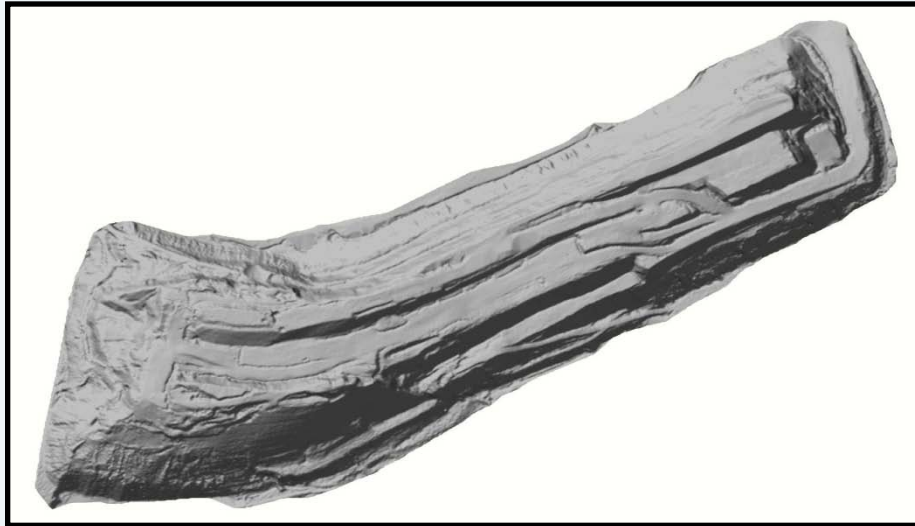
Cuttings such as quarries may be easily quantified as well. Again the need for access to these inaccessible areas is not required.

Small volumes for floor toppings can also be quantified with greater accuracy due to the comprehensive capture of original surfaces

# Volumetric Surveys



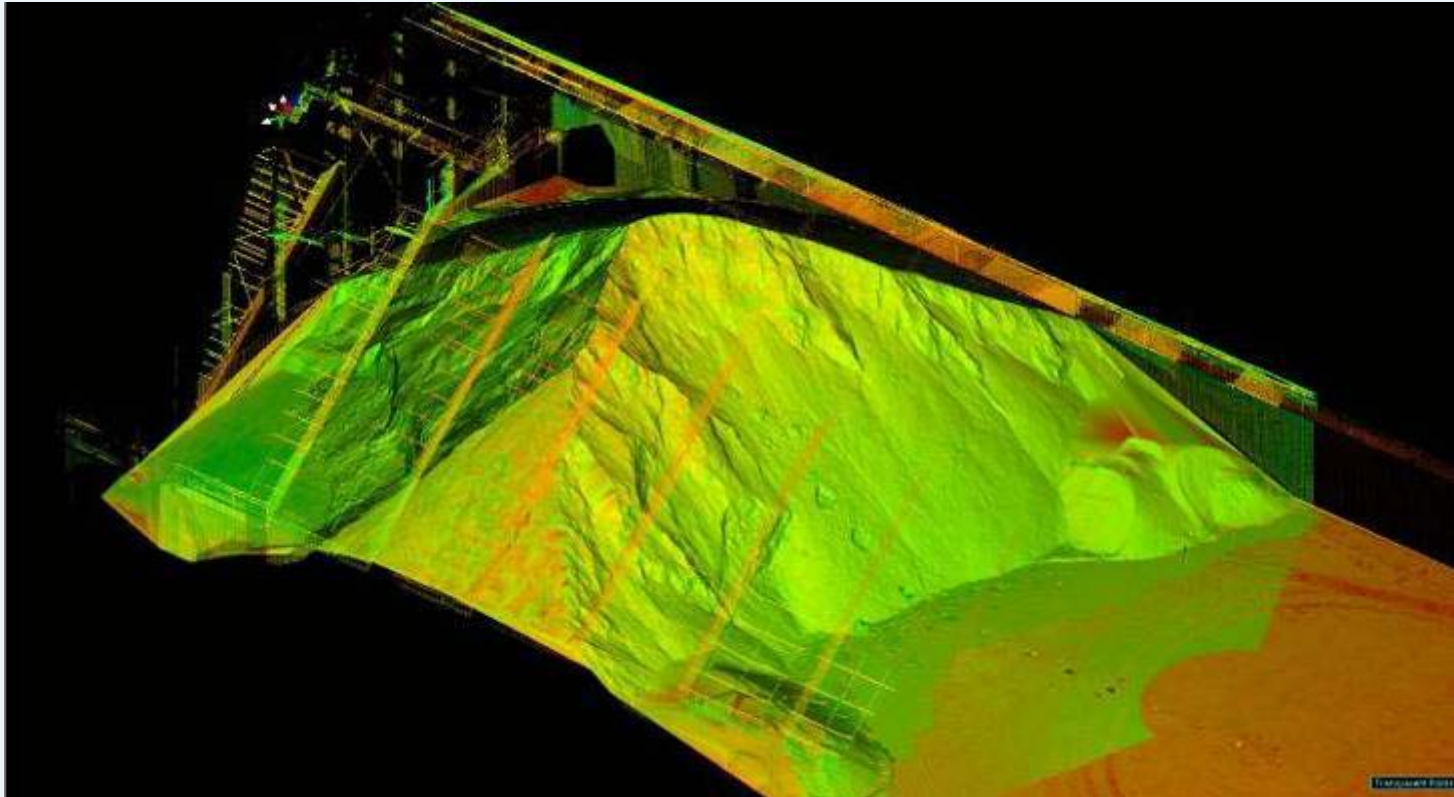
Large areas can be rapidly surveyed using stop and go scanning.



Isopachs included in the reporting to identify areas of cut and fill.

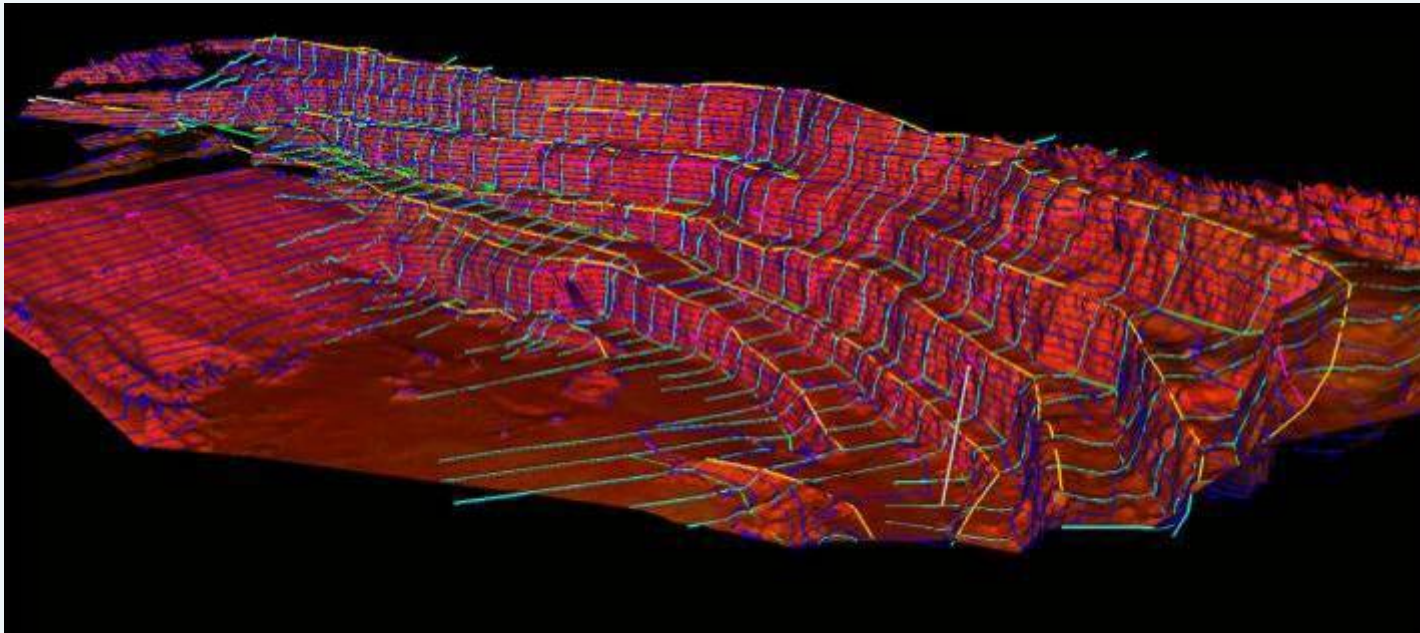
# Rapid Capture of Data

Periodic volumetric surveys can be carried out very efficiently at a much higher accuracy than conventional surveying.



# Inaccessible Areas

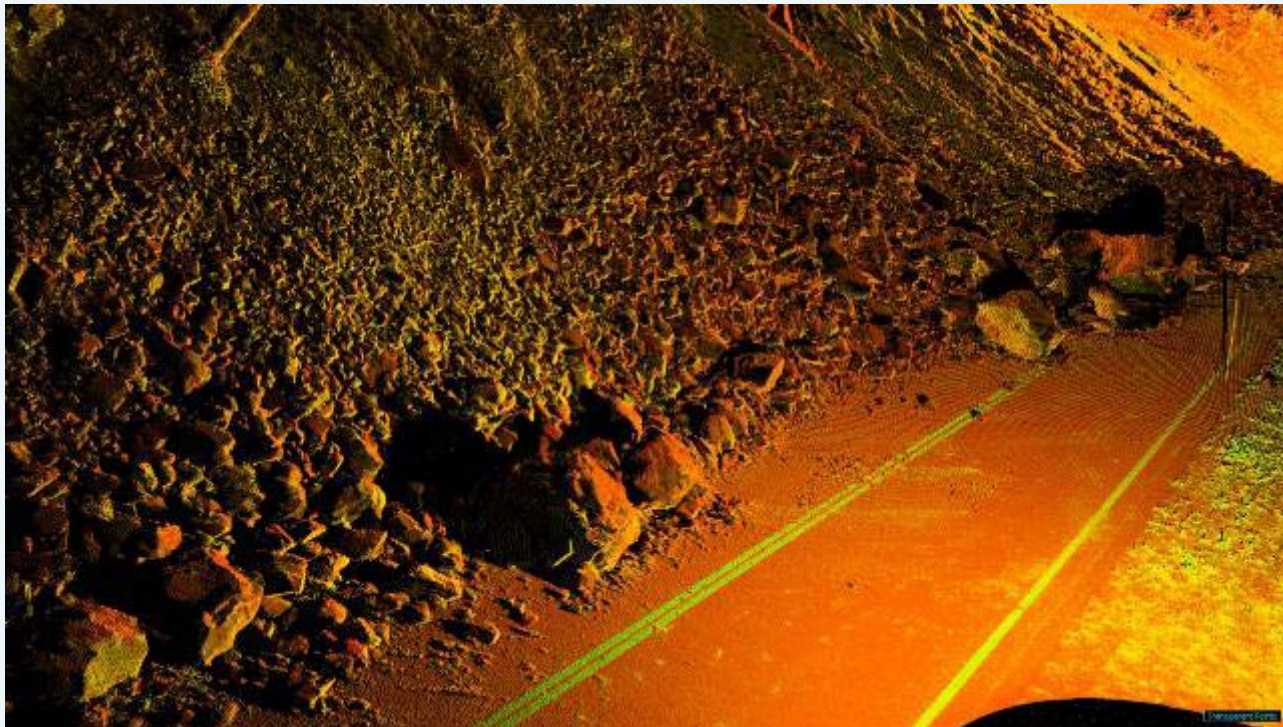
Inaccessible cuttings accurately captured



# Safe Working Environment

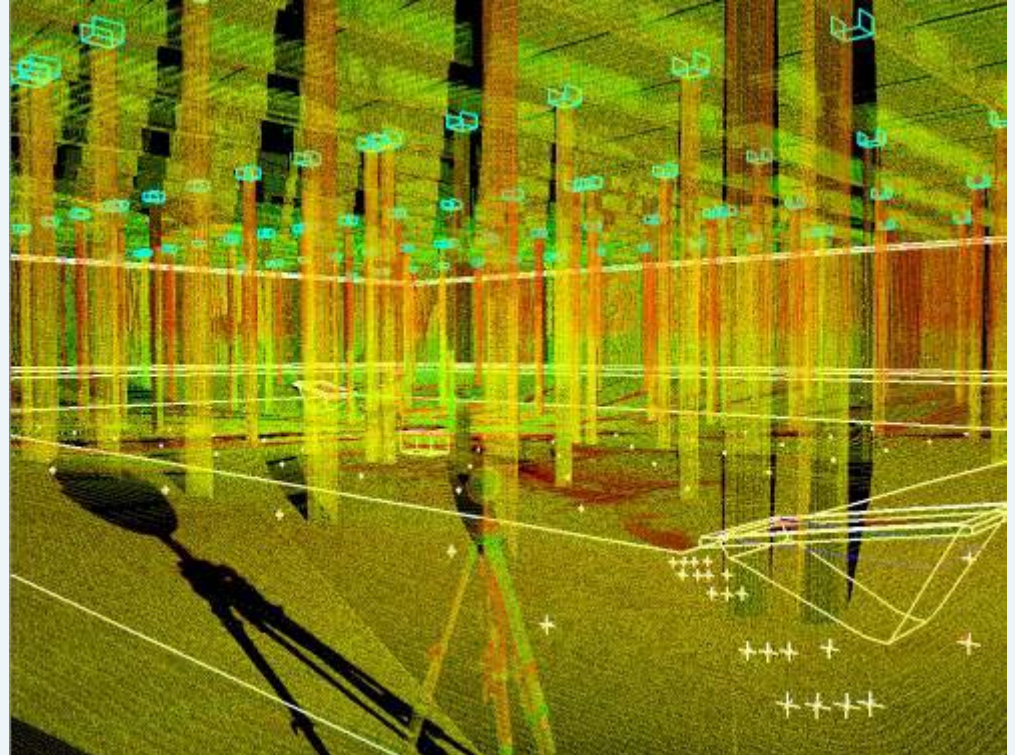
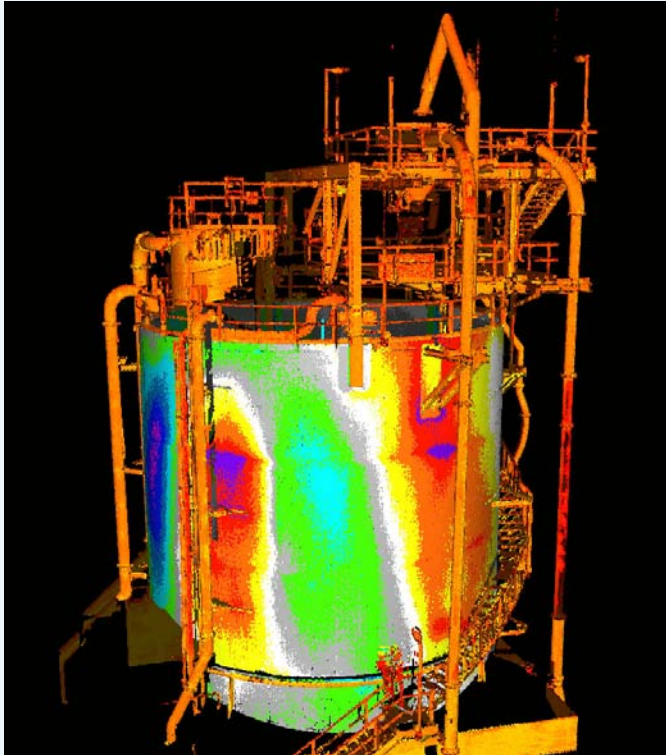
Scans can be undertaken from a position of safety for:

- Landslips
- Unstable stockpiles or materials
- Toxic stockpiles





# Reservoir Volumes



Detailed accurate volumetric reporting at 10mm intervals for calibration of reservoirs and tanks taking into account all deformations

# Creating Exceptional Value

Offices	Telephone
Brisbane	61 7 3354 9700
Sunshine Coast	61 7 5470 6099
Gladstone	61 7 4972 9120
Agnes Water	61 7 4974 9755
Weipa	61 7 4069 9414

[www.northgroup.com.au](http://www.northgroup.com.au)

