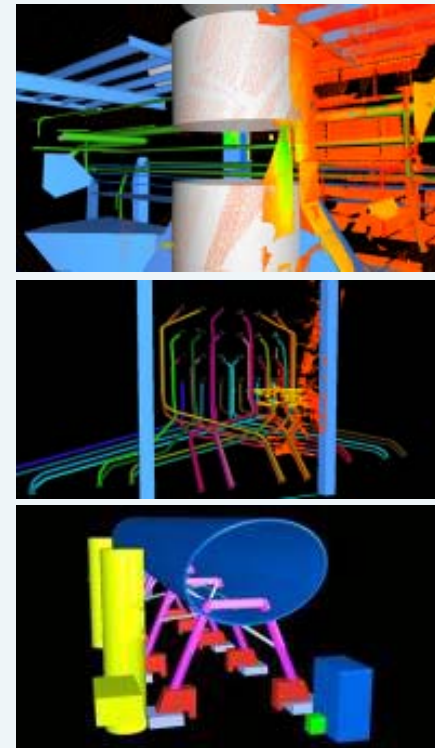


HDS in the Built Environment

Creating Exceptional Value

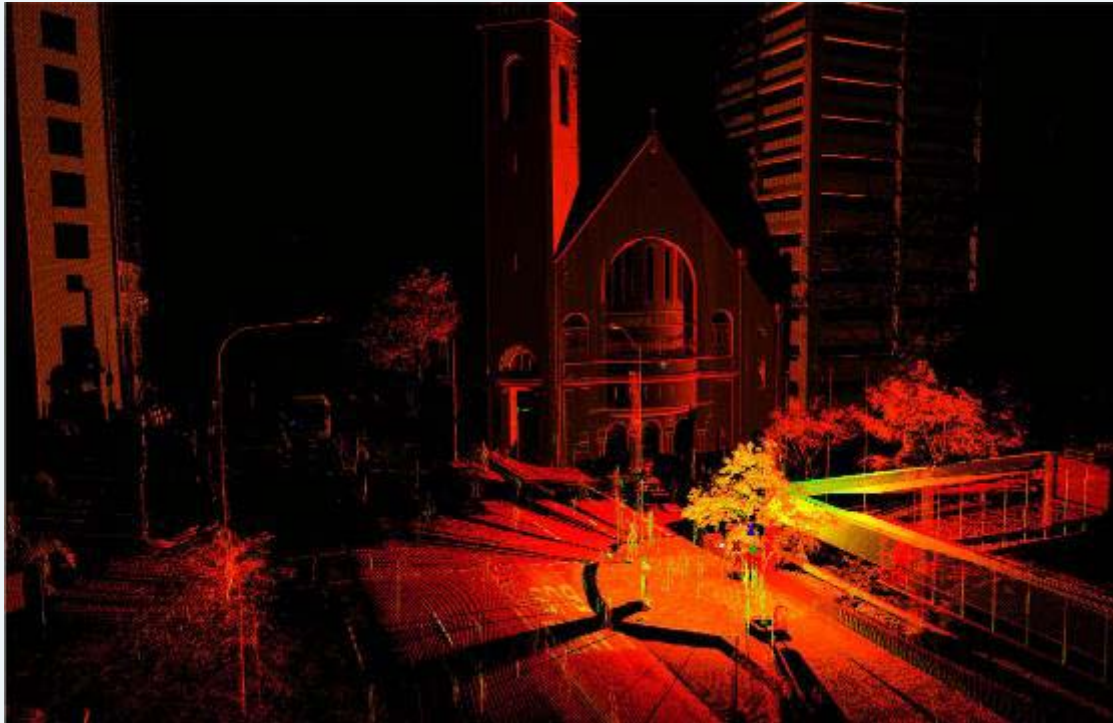


Scanning for Architectural and Town Planning applications

- Scanning has been a tool that has been adopted for many Architectural and planning applications. Both natural and man made features are captured during the process. The scanning process allows final deliverables to include 3d walkthroughs. The capture also allows these features to be measurable and extractable for your project requirements.
- Scans of internal features include full 3d capture including ceiling, wall and floor details.

HDS in the Building Environment

- High integrity data (individual pts +/- 5mm)
- Quick capture (10 million points per 5 minutes cycle)
- Everything is captured. If the scope of works change or additional information is required it can be extracted from the point cloud with out having to revisit the site



Extents of single scan

HDS in the Building Environment

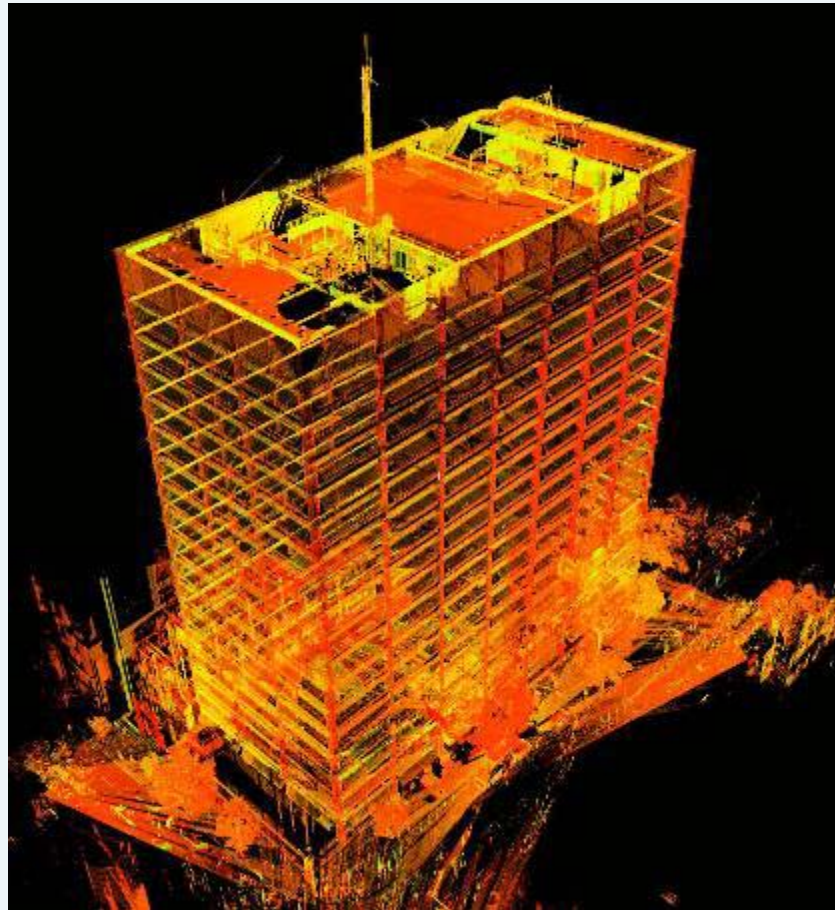
- High intensity data
- Provides instant 3D digital model of subject and provides end user with powerful communication tool



Resolution of a single scan

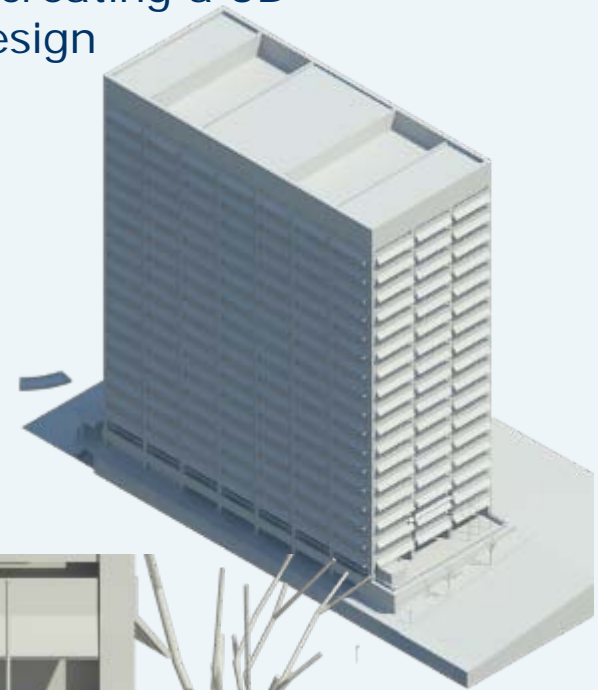
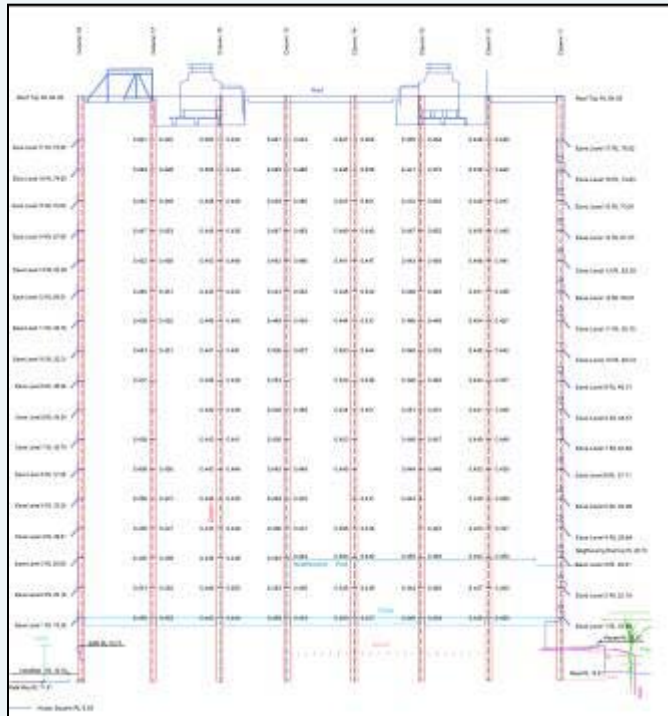
HDS in the Building Environment

Don't need to physically access the points to be captured



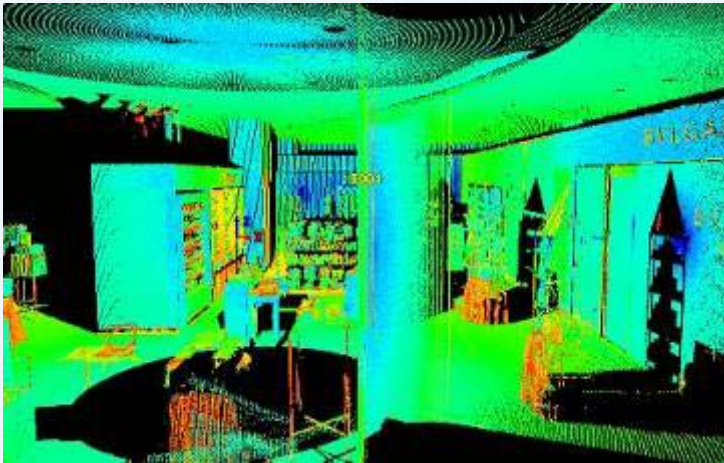
HDS in the Building Environment

Time and cost effective method of creating a 3D model for planning and design

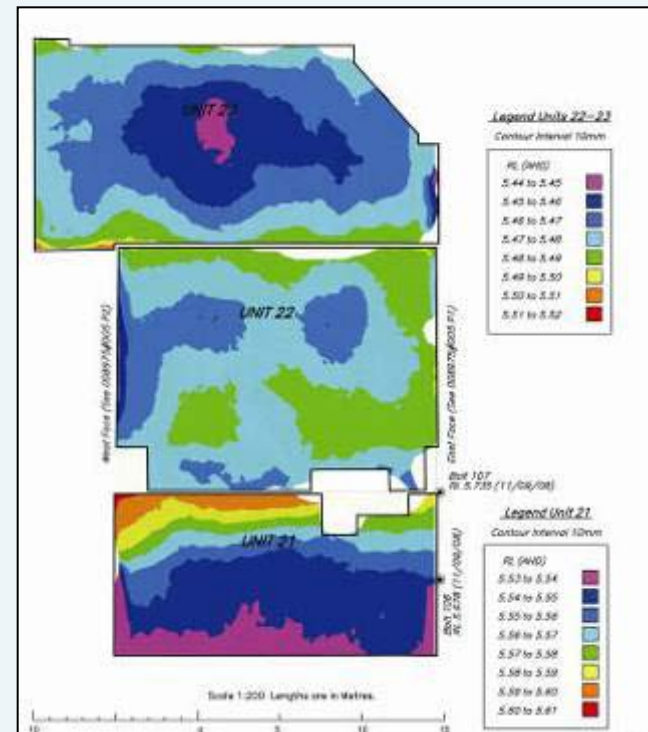


HDS in the Building Environment

Interior scans for
floor plans



Floor level reporting to a degree of detail previously not obtainable by conventional methods.



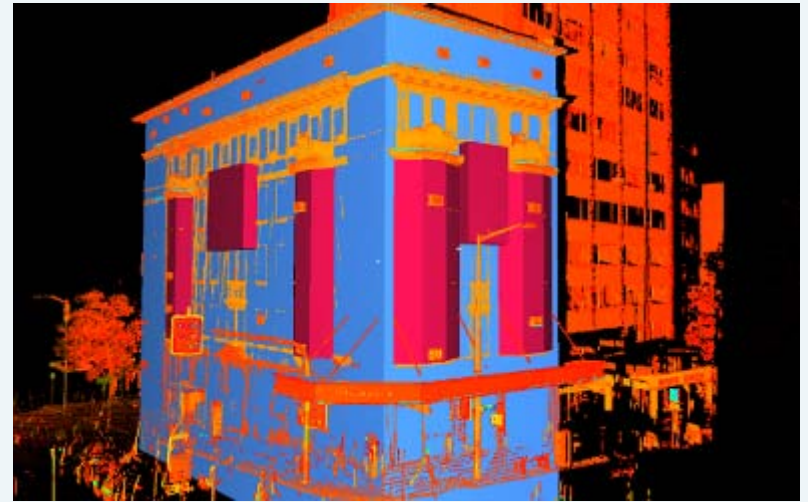
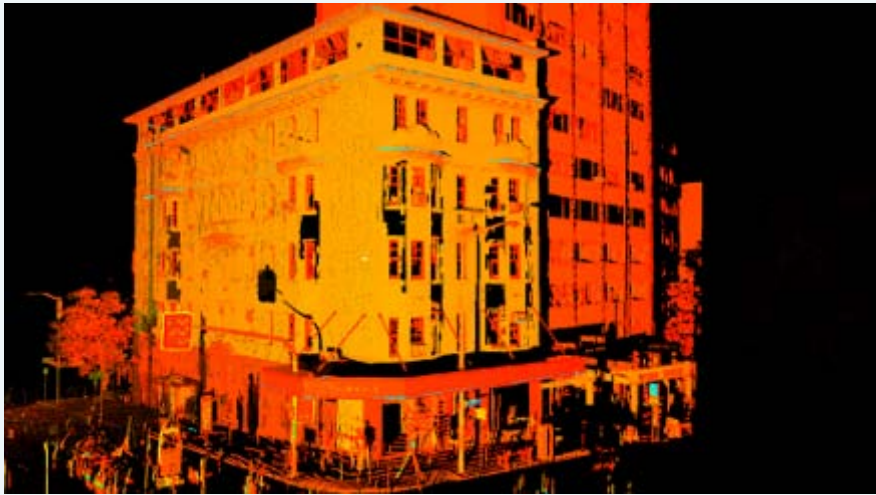
HDS in the Building Environment

Dated Archive Record of Heritage Sites

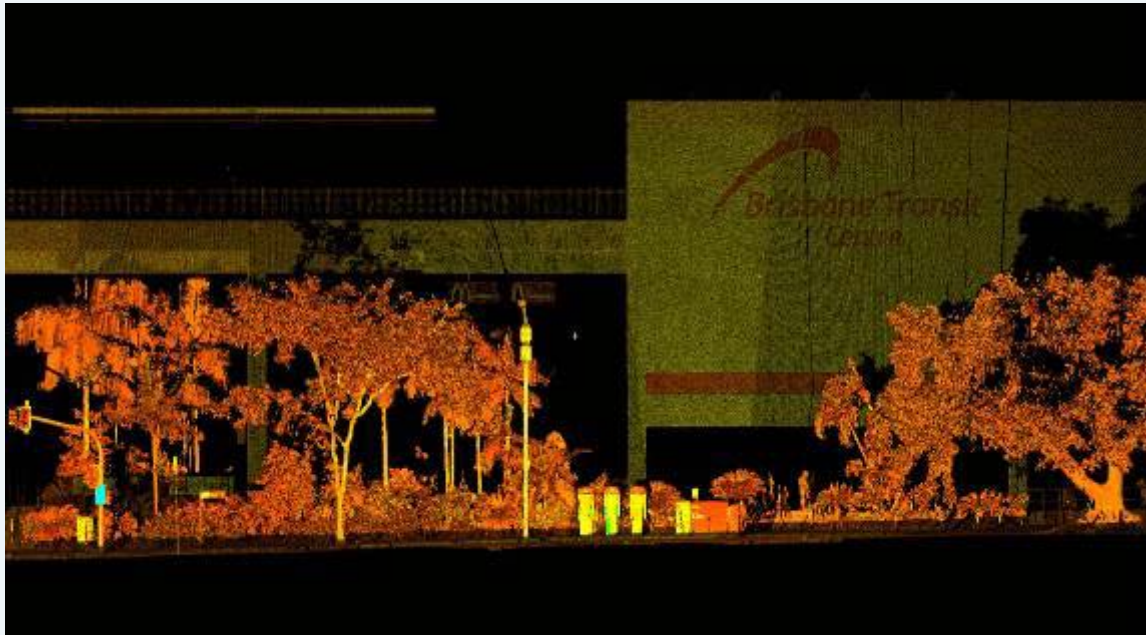


Cadastral & Town Planning

Volumetric overlay to calculate encroachment over a property boundary

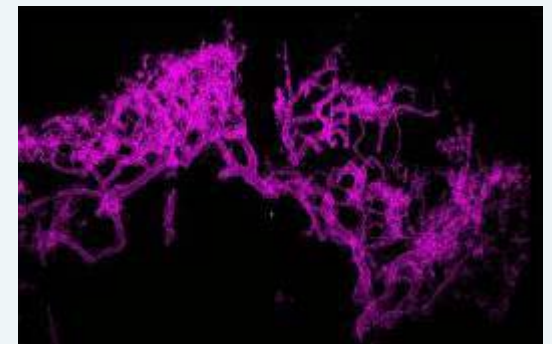
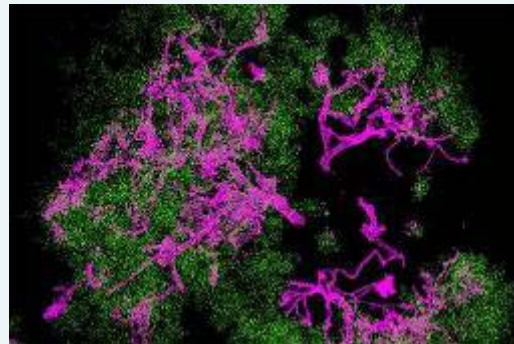


Vegetation Analysis



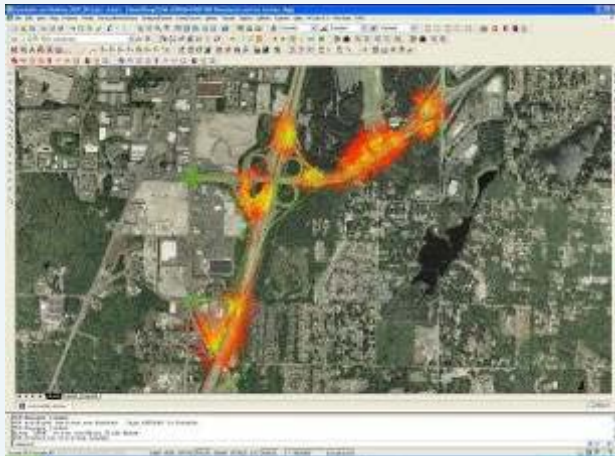
Accurate depiction of tree canopies and their interaction with the built world

Identification of individual branches if required – Separation of canopy and branches



Measurable Streetscapes

Stop and go options give a very affordable capture for the measurable streetscape



A click on the keymap will bring you to the scanned street capture.

Free TruView software enables the user to extract data, levels and measurements directly from the 3d street view



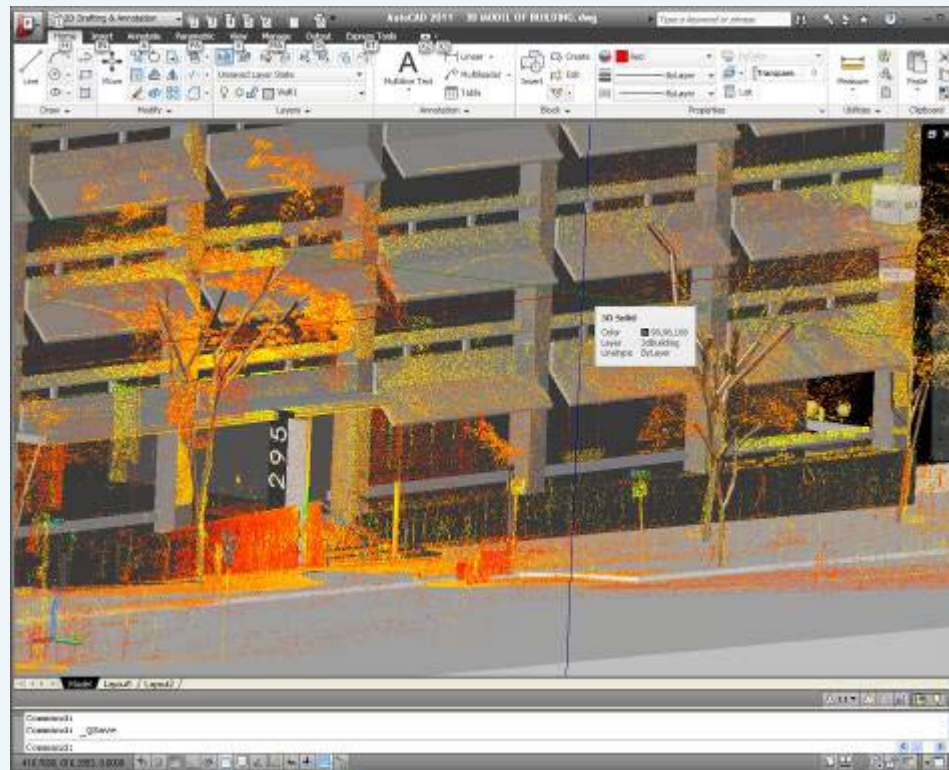
Truview

- Truview is a free scanning viewing software package which allows you to view each scan from the perspective of the scanner.
- It allows simple measurements to be made and with the use of XMLs is a very powerful communication tool.

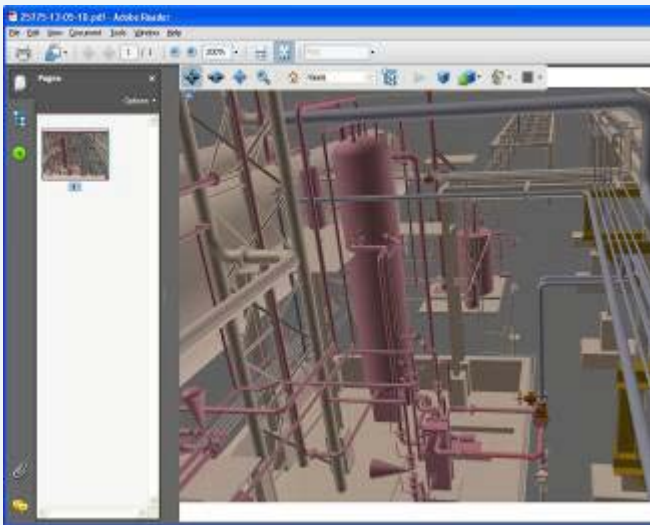
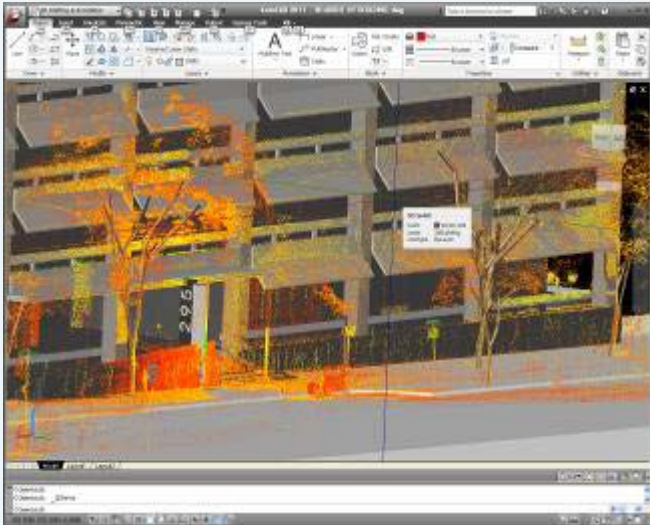


Emerging Standard

The manipulation of scan data is becoming a standard for mainstream software including AutoCAD 2011 and Adobe PDF.



Deliverables



- Cyclone software is the base scanning software that allows complex modelling capabilities and clash detection. It is traditionally used to capture and register the scans into a combined modelspace by surveyors
- Truview is a free scanning viewing software package which allows you to view each scan from the perspective of the scanner. It allows simple measurements to be made and with the use of XMLs is a very powerful communication tool.
- AutoCAD 2011 is now supporting point cloud data as a standard function can import up to 2 billion points. 3d data users will be able to manipulate the point cloud using standard 3d commands. Add on packages such as Cloudworx or Kubit will increase the functionality with better scan management, modelling of cylinders and planes and clash detection.
- Final modelled objects and coded strings may be exported into standard engineering packages such as AutoDESK, Microstation, 12d, Moss etc.
- PDF writer allows capture of scan data and 3D models that is measurable with the full version. The 3d projects can be viewed freely with recent version of PDF reader.

Creating Exceptional Value

Offices	Telephone
Brisbane	61 7 3354 9700
Sunshine Coast	61 7 5470 6099
Gladstone	61 7 4972 9120
Agnes Water	61 7 4974 9755
Weipa	61 7 4069 9414

www.northgroup.com.au

